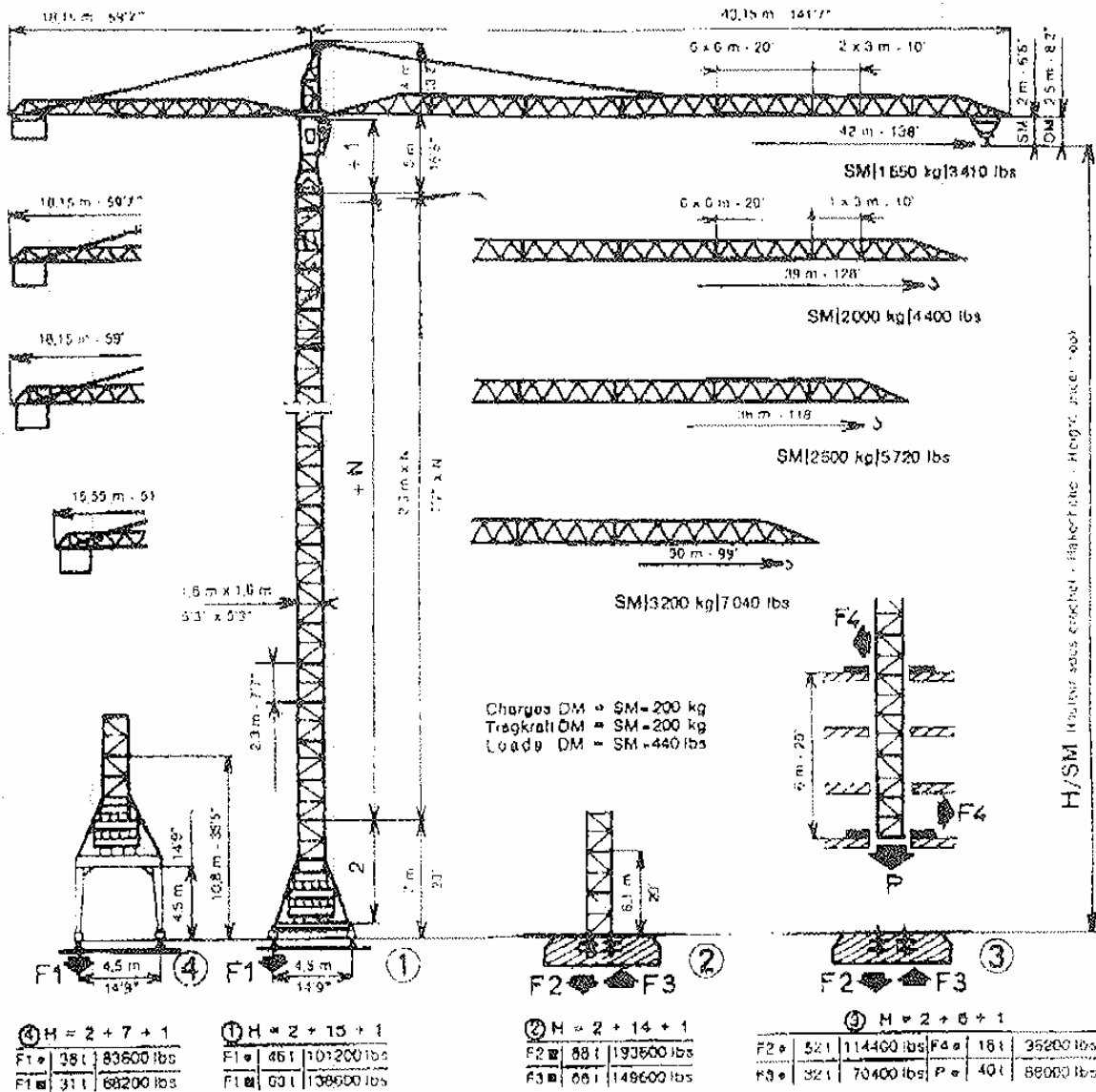


# POTAIN 646



● En service - In Betrieb - In service    ☒ Hors service - Außer Betrieb - Out of service  
 - La hauteur "H" est approximative. Chargez au poids de la tige la plus longue, et placez dans la position la plus défavorable.  
 - Die Maximale "H" ist ungeründet. Lastung an der Stelle der längsten Ausleger, (Laken wie dargestellt).  
 - The height under hook "H" is approx. - Tower of longest jib - hook as per drawing.

## LEVAGE - HEBEN - HOISTING

Troul	Hoist	Speed	Capacity	Height	Capacity
RCS 2 V1	RCS 2 V1	0 → 40	4000	0 → 132	8600
40/40 ch					
Hutwerk					
RCS 2 V1		0 → 80	2000	0 → 204	4400
40/40 PS					
Hoist Winch		0 → 20	8000	0 → 60	17600
RCS 2 V1					
40/40 hp		0 → 40	4000	0 → 132	8600

Petite Vitesse - Kleine Geschwindigkeit - Low Speed  
 Grande Vitesse - Grasse Geschwindigkeit - High Speed

Pyloane Mast	H/S/M							
	1		2		3		4	
m	feet	m	feet	m	feet	m	feet	
2+0+1	10	32'10"	9.1	29'10"	9.1	29'10"	10.5	34'4"
2+2+1	14.6	48'	13.7	45'	13.7	45'	16.4	54'0"
2+4+1	17.2	56'7"	16.3	53'2"	16.3	53'2"	21	69'0"
2+6+1	20.8	68'4"	22.9	75'4"	22.9	75'4"	27.5	90'6"
2+7+1	24.1	79'1"	25.2	82'11"	25.2	82'11"	33.9	111'0"
2+8+1	28.8	94'6"	27.5	90'6"	27.5	90'6"		
2+10+1	31	102'0"	32.1	105'8"	32.1	105'8"		
2+12+1	37.6	123'10"	36.7	120'10"	36.7	120'10"		
2+14+1	42.2	138'	41.3	136'				
2+15+1	44.5	146'7"	43.5	143'7"				
2+16+1	45.6	150'2"	44.4	145'2"				
2+17+1	49.1	161'5"	48.7	159'7"				

H/DM - H/SM = 0.5  
 = 1.5

Anlage  
 Verankerung  
 Anchorage