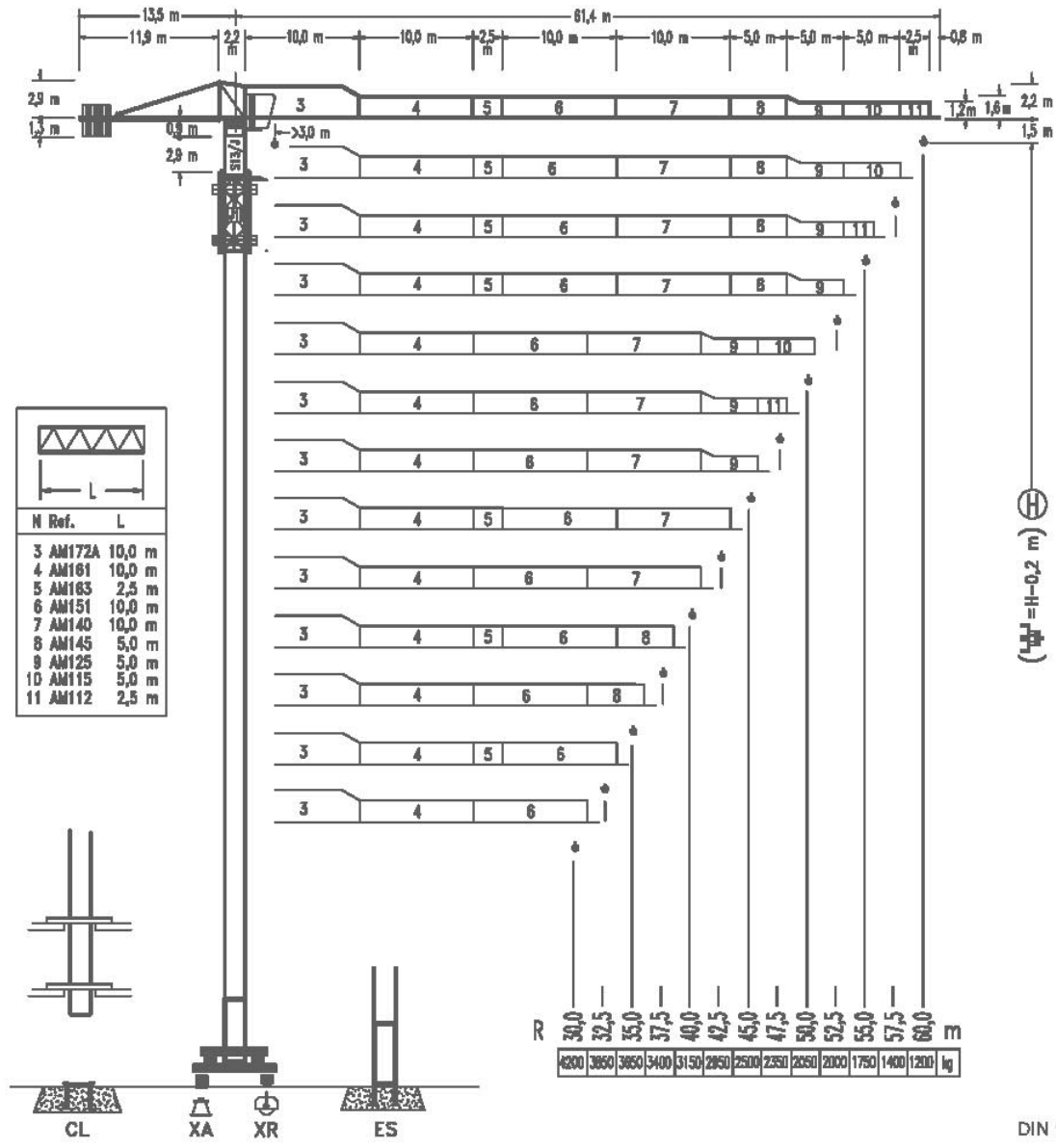


# COMANSA 11 LC 132



CE  
DIN 15018 H1 B3

| R    | Tower Crane Configuration |      |      |      |      |      |      |      |      |      |      |      |      |      |      |      |      |      |    |
|------|---------------------------|------|------|------|------|------|------|------|------|------|------|------|------|------|------|------|------|------|----|
| 60,0 | 17,0                      | 20   | 22   | 26   | 28   | 29,3 | 33,2 | 35   | 37,5 | 40   | 42,5 | 45   | 47,5 | 50   | 52,5 | 55   | 57,5 | 60   | m  |
|      | 5000                      | 4090 | 3630 | 2930 | 2650 | 2500 | 2500 | 2350 | 2160 | 2000 | 1860 | 1730 | 1620 | 1520 | 1430 | 1340 | 1270 | 1200 | kg |
| 57,5 | 18,2                      | 20   | 22   | 26   | 28   | 30   | 31,5 | 35,8 | 37,5 | 40   | 42,5 | 45   | 47,5 | 50   | 52,5 | 55   | 57,5 |      | m  |
|      | 5000                      | 4460 | 3970 | 3210 | 2920 | 2670 | 2500 | 2500 | 2360 | 2190 | 2040 | 1900 | 1780 | 1670 | 1570 | 1480 | 1400 |      | kg |
| 55,0 | 20,7                      | 22   | 26   | 28   | 30   | 32   | 35   | 35,8 | 40,8 | 42,5 | 45   | 47,5 | 50   | 52,5 | 55   |      |      |      | m  |
|      | 5000                      | 4640 | 3780 | 3450 | 3160 | 2900 | 2680 | 2500 | 2500 | 2390 | 2230 | 2090 | 1970 | 1850 | 1750 |      |      |      | kg |
| 52,5 | 22,0                      | 26   | 28   | 30   | 32   | 35   | 37   | 38,1 | 43,5 | 45   | 47,5 | 50   | 52,5 |      |      |      |      |      | m  |
|      | 5000                      | 4080 | 3720 | 3410 | 3140 | 2800 | 2600 | 2500 | 2400 | 2250 | 2120 | 2000 |      |      |      |      |      |      | kg |
| 50,0 | 21,4                      | 26   | 28   | 30   | 32   | 35   | 37   | 42,3 | 42,5 | 45   | 47,5 | 50   |      |      |      |      |      |      | m  |
|      | 5000                      | 3940 | 3590 | 3290 | 3030 | 2690 | 2500 | 2500 | 2480 | 2320 | 2180 | 2050 |      |      |      |      |      |      | kg |
| 47,5 | 22,7                      | 26   | 28   | 30   | 32   | 35   | 37   | 39   | 39,4 | 45,1 | 47,5 |      |      |      |      |      |      |      | m  |
|      | 5000                      | 4240 | 3870 | 3550 | 3280 | 2920 | 2710 | 2530 | 2500 | 2500 | 2350 |      |      |      |      |      |      |      | kg |
| 45,0 | 22,6                      | 26   | 28   | 30   | 32   | 35   | 37   | 39   | 39,3 | 45   |      |      |      |      |      |      |      |      | m  |
|      | 5000                      | 4230 | 3860 | 3540 | 3270 | 2910 | 2710 | 2520 | 2500 | 2500 |      |      |      |      |      |      |      |      | kg |
| 42,5 | 27,5                      | 30   | 32   | 35   | 37   | 40   | 42,5 |      |      |      |      |      |      |      |      |      |      |      | m  |
|      | 5000                      | 4500 | 4160 | 3720 | 3470 | 3150 | 2950 |      |      |      |      |      |      |      |      |      |      |      | kg |
| 40,0 | 27,2                      | 30   | 32   | 35   | 37   | 40   |      |      |      |      |      |      |      |      |      |      |      |      | m  |
|      | 5000                      | 4440 | 4110 | 3680 | 3430 | 3150 |      |      |      |      |      |      |      |      |      |      |      |      | kg |
| 37,5 | 27,0                      | 28   | 30   | 32   | 35   | 37,5 |      |      |      |      |      |      |      |      |      |      |      |      | m  |
|      | 5000                      | 4800 | 4410 | 4080 | 3650 | 3400 |      |      |      |      |      |      |      |      |      |      |      |      | kg |